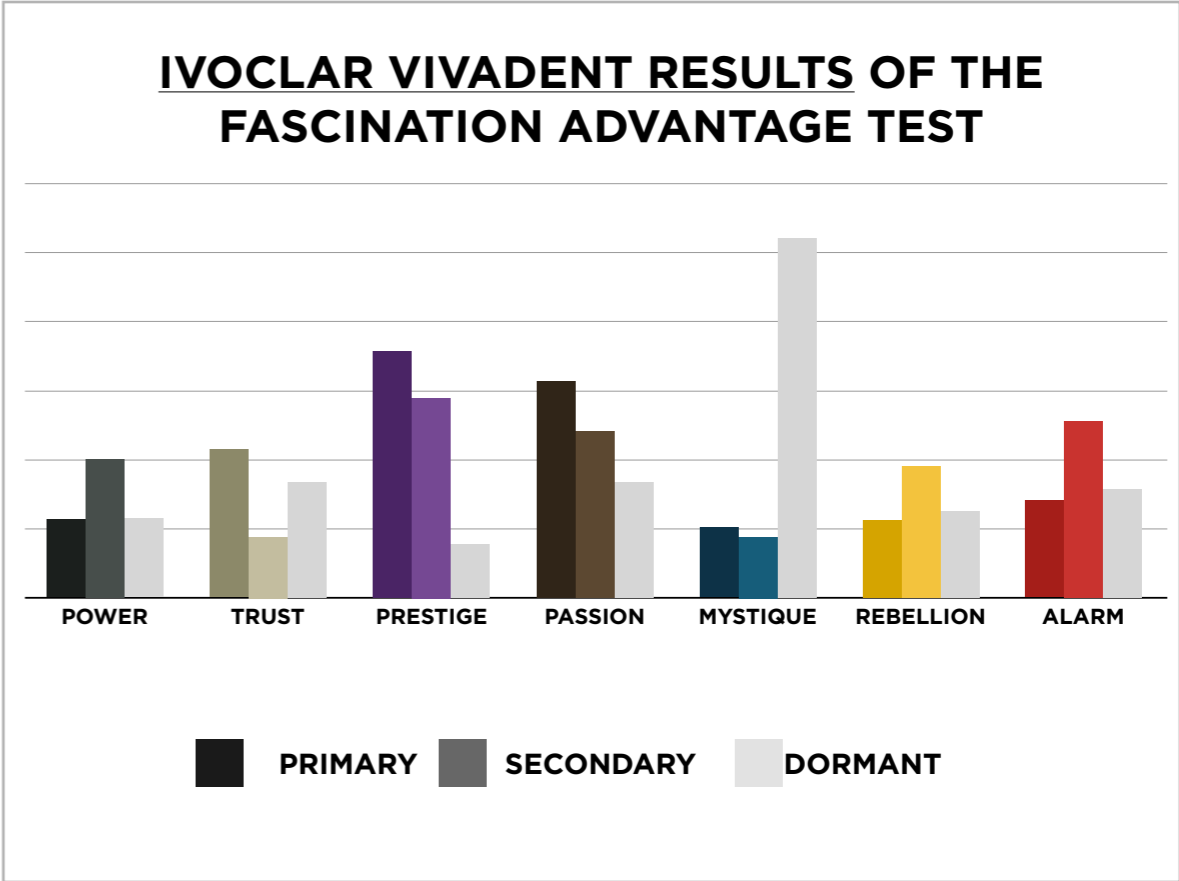
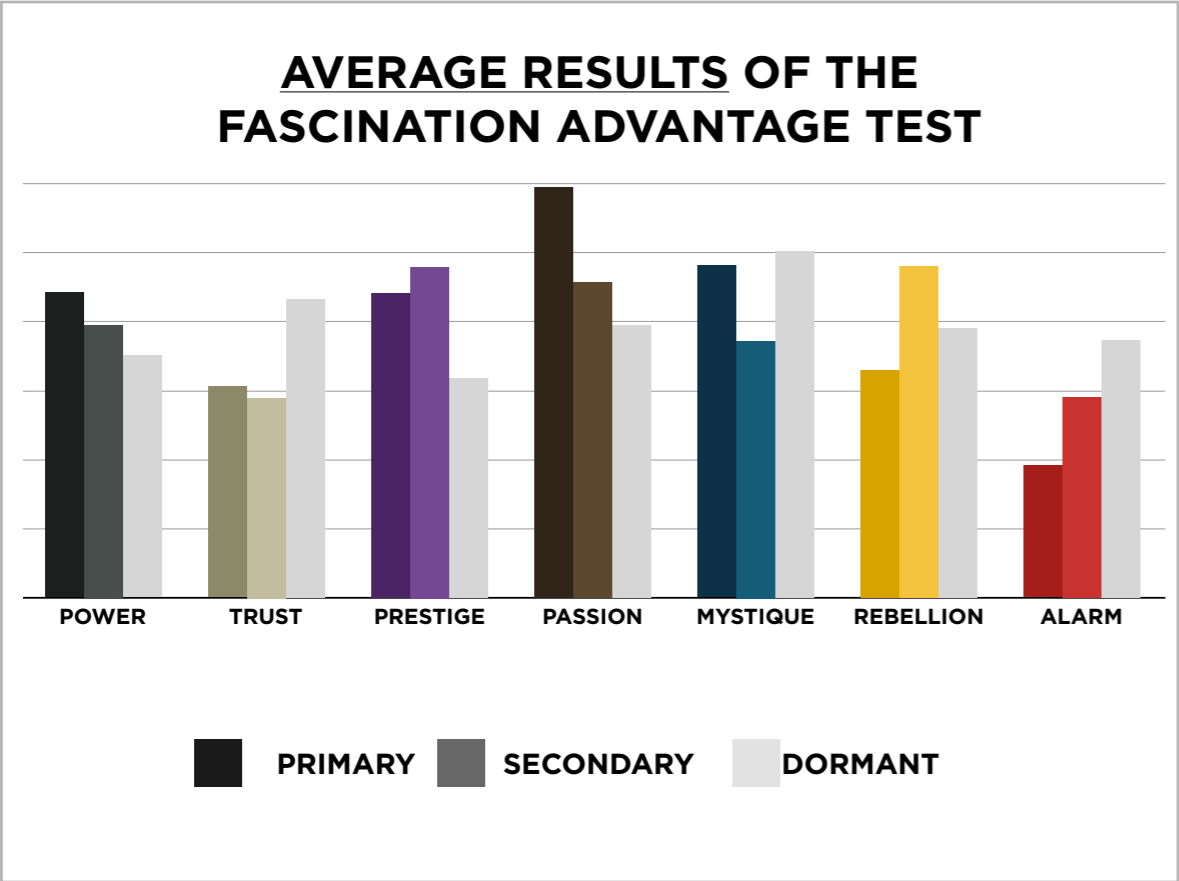


AN INSIDER'S *look* AT THE RESEARCH

FROM SALLY HOGSHEAD'S PRESENTATION TO
IVOCLAR VIVADENT ON 01/06/14



THIS IS WHAT THE RAW DATA ORIGINALLY LOOKED LIKE WHEN WE BEGAN TO COMPARE YOUR ORGANIZATION'S SCORES TO OUR OVERALL TEST POPULATION OF OVER 200,000 PEOPLE.

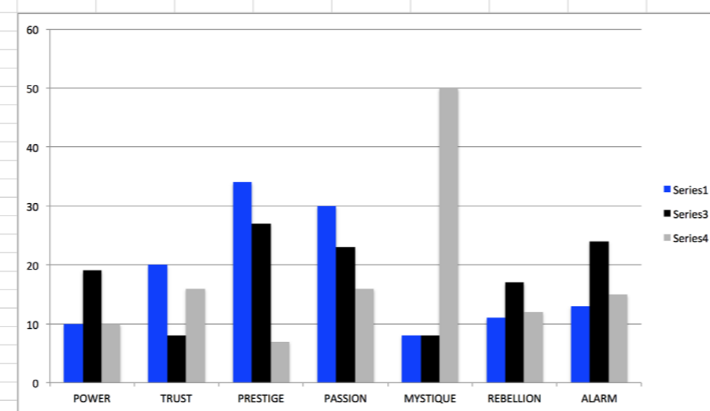
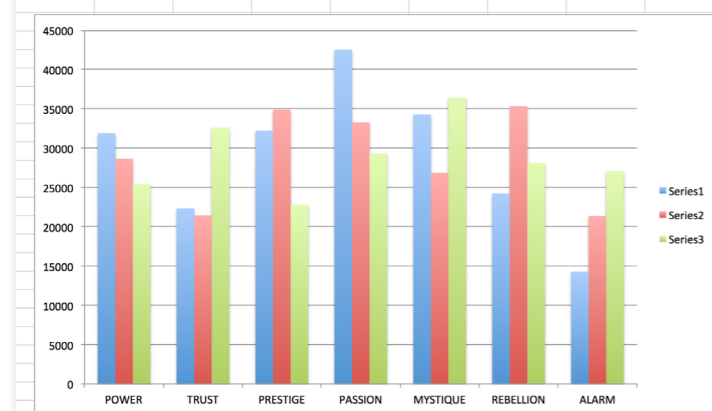


THIS IS WHAT THE RAW DATA ORIGINALLY LOOKED LIKE WHEN WE BEGAN TO COMPARE YOUR ORGANIZATION'S SCORES TO OUR OVERALL TEST POPULATION OF OVER 200,000 PEOPLE.

Primary	Secondary	Archetype	Sum	Percentage		PASSION	TRUST	MYSTIQUE	PRESTIGE	POWER	ALARM	REBELLION
prestige	passion	The Connoisseur	13	10.32%	PASSION		3	4	8	6	3	6
passion	prestige	The Talent	8	6.35%	TRUST	4		3	4	1	7	1
power	prestige	The Maestro	8	6.35%	MYSTIQUE				1		6	1
prestige	rebellion	The Avant-Garde	8	6.35%	PRESTIGE	13		1		5	7	8
prestige	alarm	The Perfectionist	7	5.56%	POWER	1			8			1
trust	alarm	The Good Citizen	7	5.56%	ALARM	4	4		4	1		
mystique	alarm	The Bullseye	6	4.76%	REBELLION	1	1		2	6	1	
passion	power	The Advocate	6	4.76%								
passion	rebellion	The Catalyst	6	4.76%		PASSION	TRUST	MYSTIQUE	PRESTIGE	POWER	ALARM	REBELLION
rebellion	power	The Maverick Leader	6	4.76%	PASSION		2.4%	3.2%	6.3%	4.8%	2.4%	4.8%
prestige	power	The Victor	5	3.97%	TRUST	3.2%		2.4%	3.2%	0.8%	5.6%	0.8%
alarm	passion	The Coordinator	4	3.17%	MYSTIQUE				0.8%		4.8%	0.8%
alarm	prestige	The Editor-in-Chief	4	3.17%	PRESTIGE	10.3%		0.8%		4.0%	5.6%	6.3%
alarm	trust	The Sustainer	4	3.17%	POWER	0.8%			6.3%			0.8%
passion	mystique	The Intrigue	4	3.17%	ALARM	3.2%	3.2%		3.2%	0.8%		
trust	passion	The Authentic	4	3.17%	REBELLION	0.8%	0.8%		1.6%	4.8%	0.8%	
trust	prestige	The Diplomat	4	3.17%								
passion	alarm	The Orchestrator	3	2.38%								
passion	trust	The Beloved	3	2.38%								
trust	mystique	The Vault	3	2.38%								
rebellion	prestige	The Trendsetter	2	1.59%								
alarm	power	The Sheriff	1	0.79%								
mystique	prestige	The Royal Guard	1	0.79%								
mystique	rebellion	The Secret Weapon	1	0.79%								
power	passion	The Ringleader	1	0.79%								
power	rebellion	The Change Agent	1	0.79%								
prestige	mystique	The Architect	1	0.79%								
rebellion	alarm	The Quick-Start	1	0.79%								
rebellion	passion	The Rockstar	1	0.79%								
rebellion	trust	The Artisan	1	0.79%								

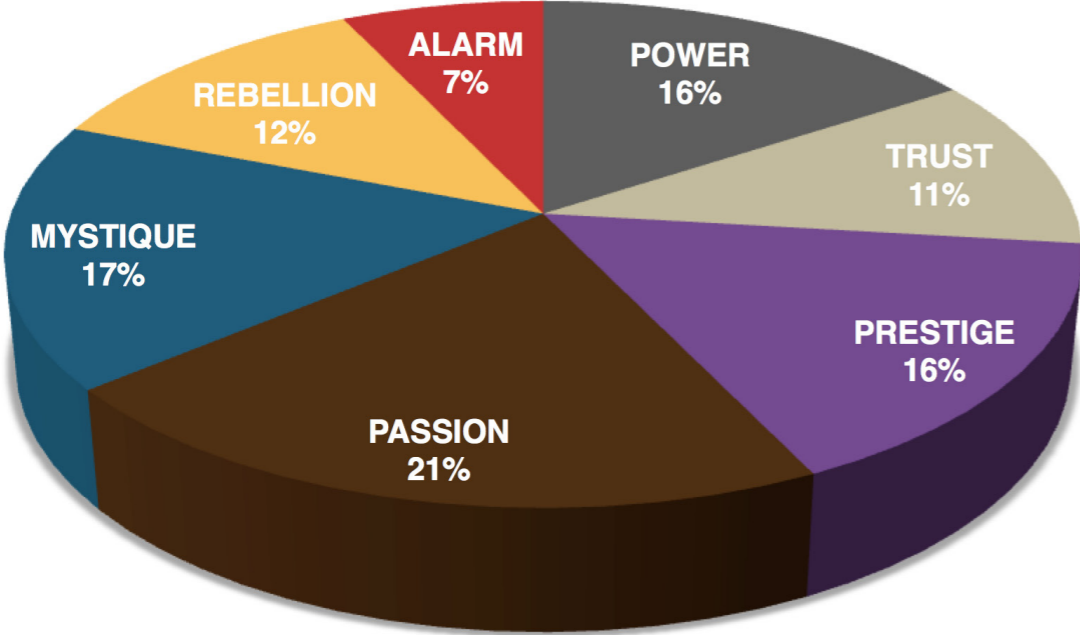
As we prepared for the event, here's our spreadsheet, organized by "Personality Archetype"

AVERAGE POPULATION									Ivoclar Vivadent								
	POWER	TRUST	PRESTIGE	PASSION	MYSTIQUE	REBELLION	ALARM	Total		POWER	TRUST	PRESTIGE	PASSION	MYSTIQUE	REBELLION	ALARM	Total
Primary	31913	22347	32230	42521	34289	24234	14291	201825	Primary	10	20	34	30	8	11	13	126
Secondary	28650	21452	34897	33274	26861	35343	21348	201825	Secondary	19	8	27	23	8	17	24	126
Dormant	25420	32630	22799	29330	36461	28107	27078	201825	Dormant	10	16	7	16	50	12	15	126
	POWER	TRUST	PRESTIGE	PASSION	MYSTIQUE	REBELLION	ALARM	Total		POWER	TRUST	PRESTIGE	PASSION	MYSTIQUE	REBELLION	ALARM	Total
Primary	15.8%	11.1%	16.0%	21.1%	17.0%	12.0%	7.1%	100.0%	Primary	7.9%	15.9%	27.0%	23.8%	6.3%	8.7%	10.3%	100.0%
Secondary	14.2%	10.6%	17.3%	16.5%	13.3%	17.5%	10.6%	100.0%	Secondary	15.1%	6.3%	21.4%	18.3%	6.3%	13.5%	19.0%	100.0%
Dormant	12.6%	16.2%	11.3%	14.5%	18.1%	13.9%	13.4%	100.0%	Dormant	7.9%	12.7%	5.6%	12.7%	39.7%	9.5%	11.9%	100.0%

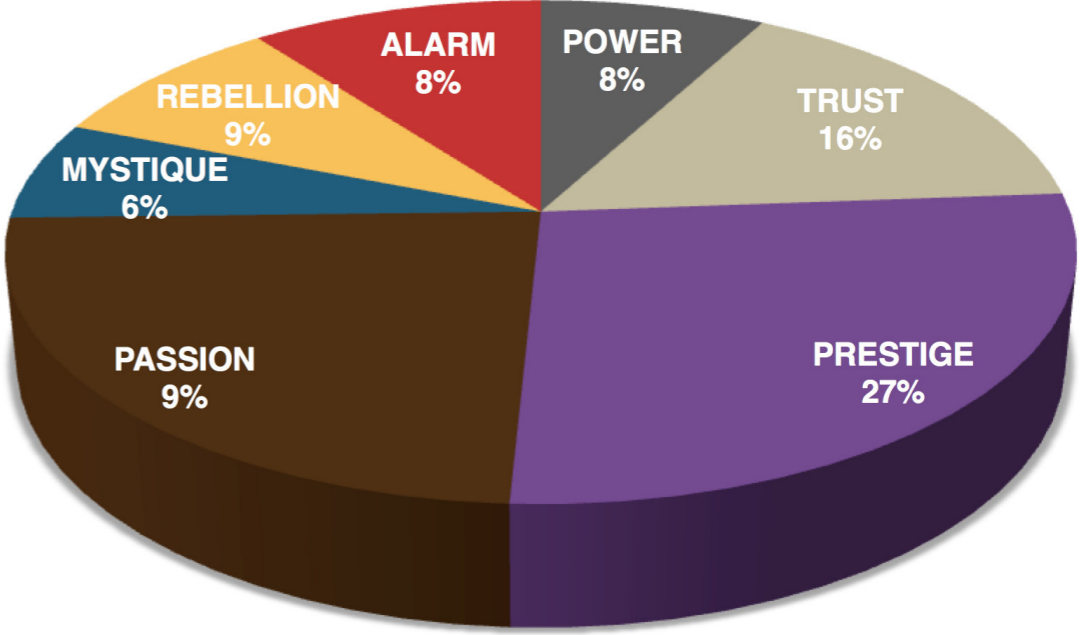


THIS IS WHAT THE RAW DATA ORIGINALLY LOOKED LIKE WHEN WE BEGAN TO COMPARE YOUR ORGANIZATION'S SCORES TO OUR OVERALL TEST POPULATION OF OVER 200,000 PEOPLE.

AVERAGE RESULTS FROM THE FASCINATION ADVANTAGE TEST



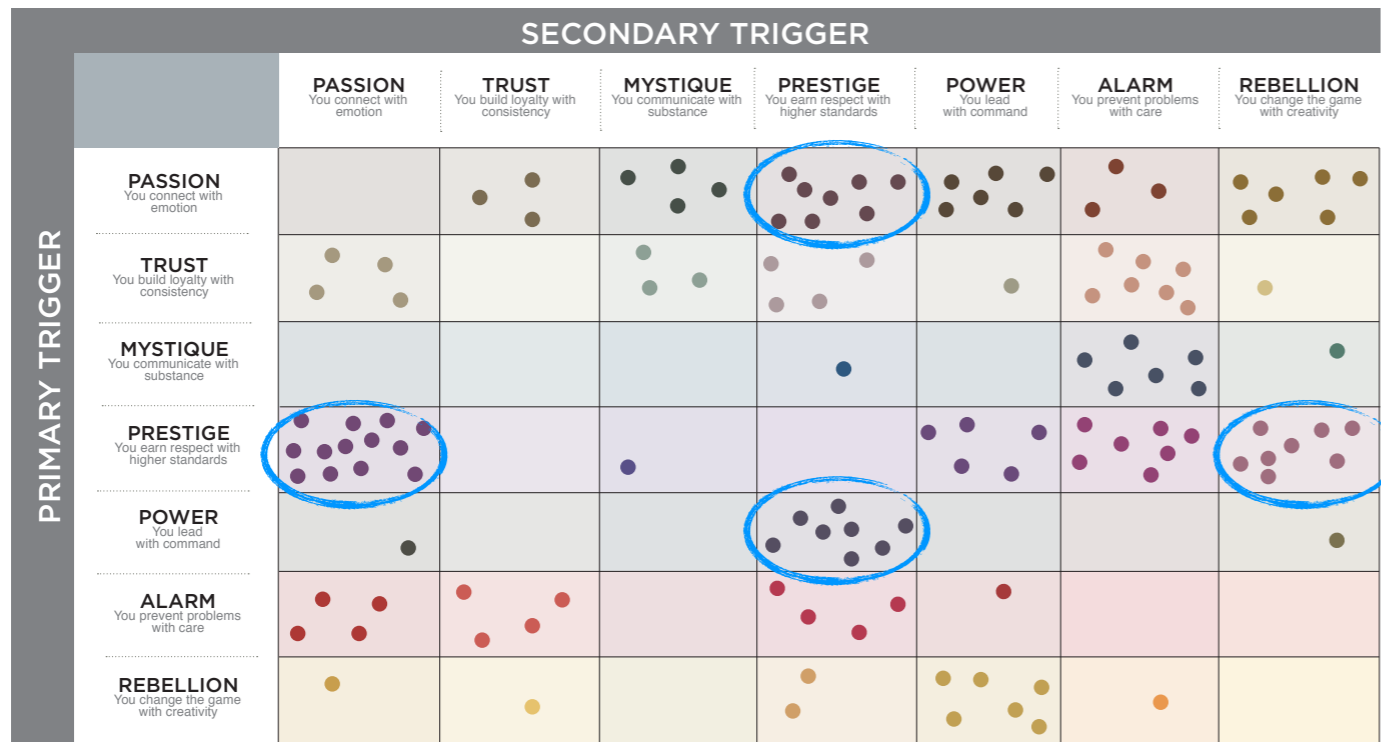
IVOCLAR VIVADENT RESULTS FROM THE FASCINATION ADVANTAGE TEST



WE COMPARED YOUR FINDINGS TO OUR MATRIX OF 49 PERSONALITY ARCHETYPES.

		SECONDARY TRIGGER						
		PASSION You connect with emotion	TRUST You build loyalty with consistency	MYSTIQUE You communicate with substance	PRESTIGE You earn respect with higher standards	POWER You lead with command	ALARM You prevent problems with care	REBELLION You change the game with creativity
PRIMARY TRIGGER	PASSION You connect with emotion	THE DRAMA Theatrical • Emotive Sensitive	THE BELOVED Nurturing • Loyal Sincere	THE INTRIGUE Perceptive • Nuanced Selective	THE TALENT Expressive • Stylish Emotionally Intelligent	THE ADVOCATE Dynamic • Inclusive Engaging	THE ORCHESTRATOR Attentive • Dedicated Detail-Oriented	THE CATALYST Outgoing • Experimental Out-of-the-Box
	TRUST You build loyalty with consistency	THE AUTHENTIC Agreeable • Accessible Dependable	THE OLD GUARD Predictable • Safe Unmovable	THE VAULT Analytical • Discreet Understated	THE DIPLOMAT Impeccable • Subtle Capable	THE GRAVITAS Dignified • Stable Hardworking	THE GOOD CITIZEN Conscientious • Modest Preventative	THE EVOLUTIONARY Curious • Open-Minded Developing over Time
	MYSTIQUE You communicate with substance	THE SUBTLE TOUCH Profound • Discerning Self-Sufficient	THE WISE OWL Observant • Assured Unruffled	THE STOIC Unemotional • Introverted Concentrated	THE ROYAL GUARD Elegant • Astute Reserved	THE VEILED STRENGTH Rational • Intentional Substantive	THE BULLSEYE Precise • Sharp Under-the-Radar	THE SECRET WEAPON Clever • Unassuming Independent
	PRESTIGE You earn respect with higher standards	THE CONNOISSEUR Astute • Discriminating In-the-Know	THE BLUE CHIP Classic • Timeless "Best-in-Class"	THE ARCHITECT Sterling • Skillful Restrained	THE LAST WORD Deliberate • Crisp Uncompromising	THE VICTOR Respected • Competitive Results-Oriented	THE PERFECTIONIST Driven • Disciplined Standard-Bearer	THE AVANT-GARDE Original • Enterprising Forward-Thinking
	POWER You lead with command	THE RINGLEADER Motivating • Vigorous Compelling	THE GUARDIAN Established • Genuine Sure-Footed	THE MASTERMIND Methodical • Intense Self-Reliant	THE MAESTRO Ambitious • Admired Focused	THE AGGRESSOR Dominant • Forceful Emphatic	THE WATCHDOG Proactive • Alert Cautionary	THE CHANGE AGENT Inventive • Vivid Quick-Witted
	ALARM You prevent problems with care	THE COORDINATOR Organized • Practical Protective	THE SUSTAINER Steadfast • Composed By-the-Book	THE INSPECTOR Private • Efficient Meticulous	THE EDITOR-IN-CHIEF Productive • Detailed Skilled	THE SHERIFF Tireless • Decisive Goal-Oriented	THE HIGH ALERT Vigilant • Exacting Prepared	THE CRAFTSMAN Strategic • Fine-Tuned Judicious
	REBELLION You change the game with creativity	THE ROCKSTAR Bold • Artistic Unorthodox	THE ARTISAN Measured • Thoughtful Craftsman-Like	THE PROVOCATEUR Innovative • Witty Unconventional	THE TRENDSETTER Elite • Progressive Advanced	THE MAVERICK LEADER Pioneering • Irreverent Entrepreneurial	THE QUICK-START Thorough • Diligent Imaginative	THE ANARCHIST Startling • Unpredictable Intensely Creative

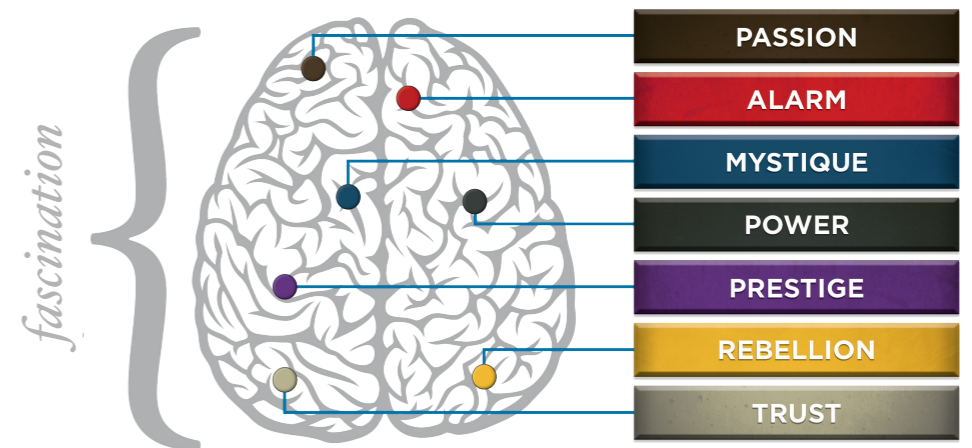
THIS IS YOUR CUSTOM “FASCINATION FINGERPRINT.”



This diagram shows the concentration of Personality Archetypes of the organization.

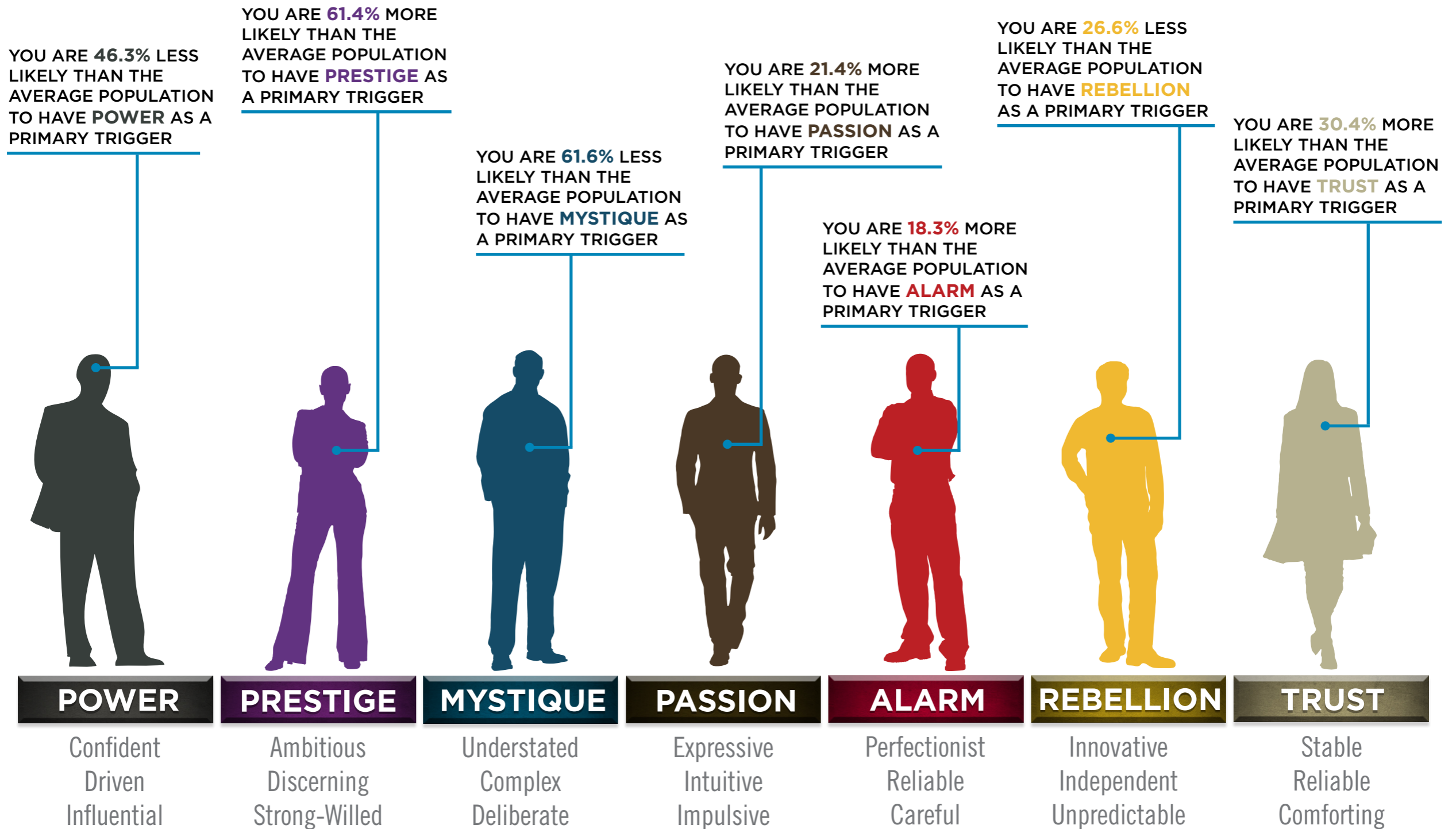
		SECONDARY TRIGGER						
		PASSION You connect with emotion	TRUST You build loyalty with consistency	MYSTIQUE You communicate with substance	PRESTIGE You earn respect with higher standards	POWER You lead with command	ALARM You prevent problems with care	REBELLION You change the game with creativity
PRIMARY TRIGGER	PASSION You connect with emotion		2.4%	3.2%	6.3%	4.8%	2.4%	4.8%
	TRUST You build loyalty with consistency	3.2%		2.4%	3.2%	0.8%	5.6%	0.8%
	MYSTIQUE You communicate with substance				0.8%		4.8%	0.8%
	PRESTIGE You earn respect with higher standards	10.3%		0.8%		4.0%	5.6%	6.3%
	POWER You lead with command	0.8%			6.3%			0.8%
	ALARM You prevent problems with care	3.2%	3.2%		3.2%	0.8%		
	REBELLION You change the game with creativity	0.8%	0.8%		1.6%	4.8%	0.8%	

This is your custom measurement of Fascination Scores. The diagram to the right shows the actual percentages of each Personality Archetype within the organization.



BASED ON YOUR AUDIENCE'S SCORES FOR "THE FASCINATION ADVANTAGE TEST," WE IDENTIFIED THEIR UNIQUE PERSONALITY STRENGTHS.

WE THEN BUILT CUSTOMIZED INSIGHTS TO PINPOINT WHAT MAKES THIS ORGANIZATION UNIQUELY FASCINATING.



HOW YOUR CO-WORKERS FASCINATE

POWER

A LEADER WHO MAKES DECISIONS

PASSION

RELATIONSHIP-BUILDER WITH
STRONG PEOPLE SKILLS

MYSTIQUE

SOLO INTELLECT BEHIND-THE-SCENES

PRESTIGE

OVERACHIEVER WITH HIGHER STANDARDS

ALARM

PRECISE DETAIL MANAGER

REBELLION

INNOVATIVE PROBLEM-SOLVER

TRUST

STABLE, RELIABLE PARTNER

CONNECT AND SHARE

LEARN MORE AND STAY IN TOUCH

Learn more about the Fascination Advantage System and how it can help your team work more effectively and productively together at HowToFascinate.com

SOCIAL MEDIA CONNECTIONS



FACEBOOK

[Facebook.com/HowToFascinate](https://www.facebook.com/HowToFascinate)



TWITTER

[@SallyHogshead](https://twitter.com/SallyHogshead)



[@HowToFascinate](https://twitter.com/HowToFascinate)



EMAIL

Hello@HowToFascinate.com



AMAZON

[Fascinate: Your 7 Triggers to Persuasion and Captivation](https://www.amazon.com/dp/B000APR004)



LINKEDIN

[SallyHogshead](https://www.linkedin.com/company/SallyHogshead)



YOUTUBE

[Youtube.com/SallyHogshead](https://www.youtube.com/SallyHogshead)



SALLY'S WEBSITES

SallyHogshead.com



Hog Blog

Home | Login | Search Site | BUY NOW

THE FASCINATION SYSTEM | FOR COMPANIES | FOR YOURSELF | OUR RESEARCH | PRODUCTS AND PRICING | ABOUT US

YOU ARE FASCINATING

Our research proves it. Discover your own natural, hidden strengths of persuasion through our personality assessment.

[LEARN HOW TO FASCINATE](#)

Discover your unique force of influence. Our assessment will reveal how you can immediately harness your customer's attention by understanding and applying your personality's natural advantages. [LEARN MORE](#)

Identify your own natural advantages. Our research proves it: Your personality has a specific combination of fascination strengths and weaknesses. Discover yours today, so you can start to leverage your powers of persuasion. [LEARN MORE](#)

Sign up for FREE ways to become more persuasive. Get a free "cheat sheet" now, and then monthly ideas to harness your personality strengths. First Name: Email: [SIGN UP](#) We will not sell or share your email address.

"In one hour, Sally transformed how our employees think and work. The lasting results have been incredible."
- Daina Middleton, CEO, Perfemica

"The groundbreaking Fascinate personality test literally had our room of 500 executives standing up from their chairs to get every detail."
- Verna Hamish, Fortune Growth Summit, CEO Gaultier, Author of Mastering the Rockefeller Habits

The 49 Personality Archetypes | Developed by Sally Hogshead | Help Your Employees to Persuade and Influence

HowToFascinate.com